

# Product Information

## Space Rocket Play Panels

BS EN 1176 - Designed to British & European Standards

### MATERIALS

**Panels** - Two Colour High Density Polyethylene (HDPE)

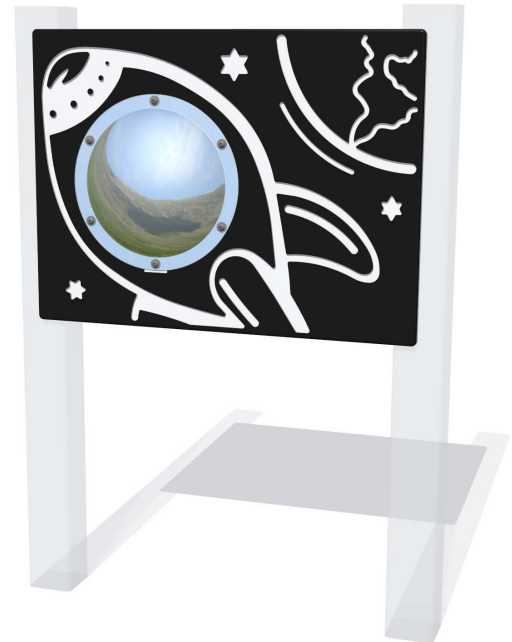
**Dome** - Shatterproof Polycarbonate

### SUPPLY METHOD

**Panel** - Pre-assembled singular panel



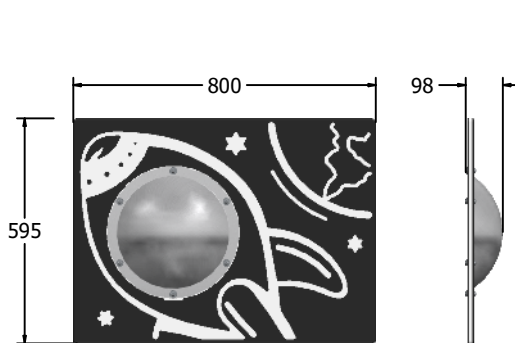
**FIROCKET6C** - Space Rocket with Cut-out and Clear Dome



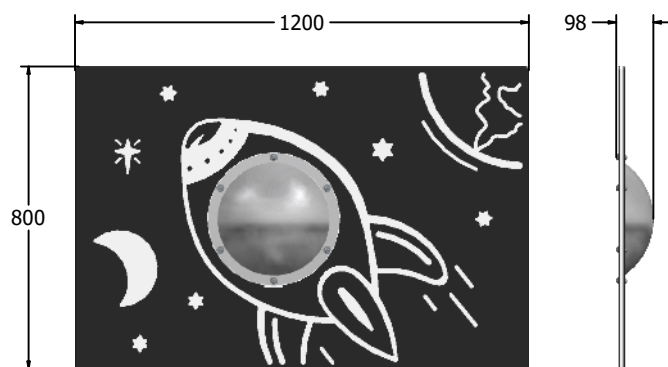
**FIROCKET6M** - Space Rocket with Mirrored Dome

\*panel available with mirrored dome or cut-out with clear dome

## DIMENSIONS



**FIROCKET6M**



**FIROCKET3M**

## TECHNICAL

**Age Range:** 2+ Years  
**Largest Part:** FIROCKET6M - 595 x 800 x 98mm  
**Total Weight:** FIROCKET6M - 8.5kg  
**Surfacing:** N/A

**Age Range:** 2+ Years  
**Largest Part:** FIROCKET6C - 595 x 800 x 98mm  
**Total Weight:** FIROCKET6C - 7.5kg  
**Surfacing:** N/A

**Age Range:** 2+ Years  
**Largest Part:** FIROCKET3M - 800 x 1200 x 98mm  
**Total Weight:** FIROCKET3M - 16.5kg  
**Surfacing:** N/A

**Age Range:** 2+ Years  
**Largest Part:** FIROCKET3C - 800 x 1200 x 98mm  
**Total Weight:** FIROCKET3C - 16kg  
**Surfacing:** N/A

IMPORTANT: you must specify the colour option you require at the time of order if it is different from the colour listed/shown above, requirements are subject to availability at the time of order